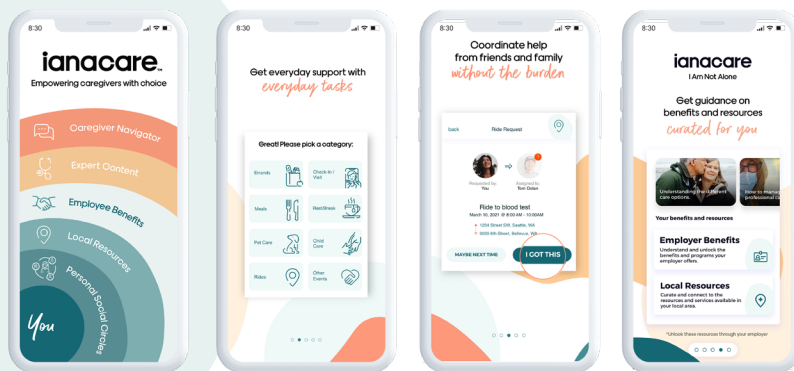


# We're your support team so you can focus on caregiving.

Otsuka partners with ianacare to provide practical and emotional support for family caregivers. Mobilize & organize support from friends and family, connect to benefits & resources, access expert content, and connect with a personal Caregiver Navigator.

## Organize & mobilize the layers of support - all in one place.



- ✓ **Personal Social Circles:** Coordinate help from friends & family.
- ✓ **Employee Benefits & Local Resources:** Easily access resources personalized for you.
- ✓ **Expert Content:** Receive tips & content across the 6 pillars of caregiving.
- ✓ **Caregiver Navigator:** Unlimited access to personal guidance for your unique situation.

## Support for every kind of caregiver



### Mental Health

Get guidance on tactics, education, and services to care for the spectrum of mental health conditions.



### Chronic Conditions

Coordinate care and rally support for a loved one with Alzheimer's disease, cancer, heart disease, stroke, and other conditions.



### Children/Adults with Special Needs/Disabilities

Connect with local services and build an ongoing sustainable support team.



### Eldercare

Personalized guidance on how to prepare, leverage resources, and manage family logistics.



### Accidents & Crisis Care

Did you tear your ACL, break an arm, or have an accident? ianacare is not only for long-term or terminal conditions.



### Veteran Support

Navigate resources, unlock benefits, and build an integrated support team veterans deserve.

**CREATE YOUR ACCOUNT**

[app.ianacare.com/otsuka](https://app.ianacare.com/otsuka)

If you have any questions or need assistance please contact [info@ianacare.com](mailto:info@ianacare.com)